



# THE ULTIMATE BATHROOM RENOVATION GUIDE:

**EVERYTHING YOU NEED FOR A STUNNING, STRESS-FREE TRANSFORMATION.**



ARISTOCRATIC

CONSTRUCTIONS

# WHERE TO START?

**EMBARKING ON A BATHROOM RENOVATION CAN SEEM DAUNTING, BUT WITH CAREFUL PLANNING AND EXECUTION, YOU CAN TRANSFORM YOUR SPACE INTO A BEAUTIFUL AND FUNCTIONAL RETREAT. THIS GUIDE WILL WALK YOU THROUGH ESSENTIAL STEPS TO ENSURE A SMOOTH AND STRESS-FREE RENOVATION.**

## STEP 1: DEFINE YOUR GOALS

**START BY CLARIFYING YOUR RENOVATION GOALS. DETERMINE HOW YOU USE THE BATHROOM AND ANY SPECIAL NEEDS. THIS WILL GUIDE YOUR DESIGN CHOICES AND HELP AVOID IMPULSIVE DECISIONS.**

TYPES OF BATHROOMS:

- |                                      |                                     |                                |
|--------------------------------------|-------------------------------------|--------------------------------|
| <input type="checkbox"/> PRIMARY     | <input type="checkbox"/> CHILDREN'S | <input type="checkbox"/> OTHER |
| <input type="checkbox"/> POWDER ROOM | <input type="checkbox"/> GUEST      |                                |

USAGE: FREQUENCY AND TIMES OF DAY

LONGEVITY: HOW LONG YOU PLAN TO STAY IN YOUR HOME.

STYLE: SIMPLE UPDATE OR A MORE LUXURIOUS DESIGN.

SPECIAL CONSIDERATIONS: ANY SPECIFIC NEEDS OR PREFERENCES.

EXPERT TIP:

IF YOU AIM TO UPDATE, CONSIDER MINOR CHANGES LIKE NEW TILES OR FIXTURES. FOR INCREASING HOME VALUE, OPT FOR CLASSIC DESIGNS. MAJOR REDESIGNS SHOULD INVOLVE PROFESSIONAL CONSULTATION.

## STEP 2: RESEARCH & BUDGET

**ESTABLISH A CLEAR BUDGET TO MANAGE YOUR RENOVATION COSTS EFFECTIVELY:**

INCLUDE A BUFFER FOR 10-20% FOR UNEXPECTED EXPENSES:

- \$3,000 - \$12,000 - BASIC UPDATE
- \$12,000 - \$35,000 - MEDIAN
- \$35,000 - \$100,000 - HIGH-END



## STEP 3: HIRE A PROFESSIONAL

**SELECTING THE RIGHT PROFESSIONAL IS CRUCIAL. DO YOUR RESEARCH, CHECK REVIEWS, AND REQUEST MULTIPLE QUOTES.**

GET AT LEAST THREE QUOTES TO ENSURE A FAIR PRICE AND QUALITY WORK. DESIGNERS ARE IDEAL FOR COMPREHENSIVE CHANGES AND COMPLEX REMODELS WHEN RELOCATING ITEMS. CONTRACTORS ARE NECESSARY FOR MAJOR STRUCTURAL OR PLUMBING CHANGES.

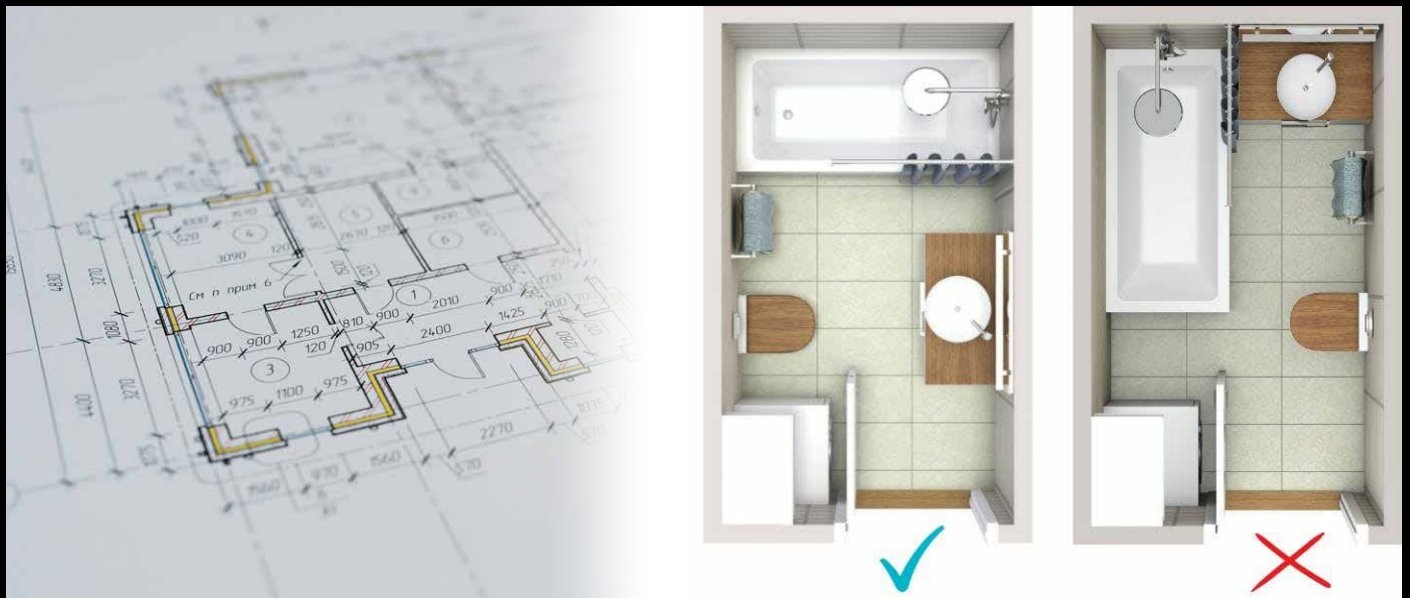


**IT'S APPEALING TO DIY WHERE POSSIBLE, JUST REMEMBER IT'S BEST TO DO IT RIGHT THE FIRST TIME.**

## STEP 4: PRE-DESIGN QUESTIONS

**BEFORE DIVING INTO DESIGN, ADDRESS THESE CONSIDERATIONS:**

- SPACE ADJUSTMENTS: CAN YOU REMOVE WALLS OR ALTER LAYOUTS?
- TOILET PLACEMENT: WATER CLOSET OR OPEN SPACE?
- STORAGE NEEDS: ADDITIONAL CABINETS OR SHELVING?
- LIGHTING AND WINDOWS: ADD NATURAL LIGHT OR SKYLIGHTS?
- VANITY PREFERENCES: SINGLE OR DOUBLE SINKS, HEIGHT ADJUSTMENTS?



## STEP 5: CONFIRM YOUR LAYOUT

**MEASURE AND SKETCH YOUR CURRENT BATHROOM LAYOUT WITH ALL FIXTURES, THEN REDRAW THE NEW LAYOUT IN A DIFFERENT COLOR WHILE RECORDING FIXTURE DIMENSIONS TO ENSURE THE DESIGN IS FEASIBLE.**

FOR BATHROOM EXTENSIONS, IT'S ESSENTIAL TO WORK WITH LICENSED PROFESSIONALS, SUCH AS CARPENTERS OR BUILDERS, ESPECIALLY FOR SIGNIFICANT CHANGES LIKE EXPANDING THE SPACE OR MAKING STRUCTURAL ALTERATIONS. THEY WILL ENSURE THAT THE NEW CONSTRUCTION MEETS ALL BUILDING CODE REQUIREMENTS. EXTENSIONS OFTEN REQUIRE DETAILED PLANNING AND PERMITS, SO IT'S IMPORTANT TO COORDINATE EARLY WITH YOUR CONTRACTOR TO MANAGE THESE ASPECTS.

## STEP 6: CHOOSE YOUR THEME

USE ONLINE RESOURCES LIKE PINTEREST, THE LOCAL PROJECT AND DESIGN MAGAZINES FOR INSPIRATION.

**MOOD:** LIGHT & BRIGHT, EARTHY & INVITING, OR MOODY & DRAMATIC.

**INSPIRATION:** LOOK FOR COMMON ELEMENTS YOU LIKE, SUCH AS VANITY DESIGNS OR TILE CHOICES.

**COHESION:** ENSURE THE THEME COMPLEMENTS THE REST OF YOUR HOME.



## STEP 7: SELECT FLOOR TILES

FLOOR TILES SET THE TONE FOR THE ROOM - A KEY TIP IS TO MATCH THE FLOOR TILES WITH THE SHOWER BASE FOR A COHESIVE LOOK.

**TILE OPTIONS:** CHOOSE BETWEEN LIGHT OR DARK, CERAMIC OR PORCELAIN. CONSIDER TILE SIZE AND GROUT COLOUR.

**PROPORTION:** LARGER TILES CAN MAKE A SPACE FEEL BIGGER BUT SHOULD BE PROPORTIONATE TO THE ROOM.

## STEP 8: CHOOSE WALL TILES & TRIMS

YOU HAVE ENDLESS DESIGN POSSIBILITIES, FROM LUXURIOUS FEATURE TILES TO ELEGANT PATTERNS. CERAMIC TILES ARE A POPULAR CHOICE, HOWEVER LOOK FOR THE FEELING & FOLLOW TONES, TEXTURES & COLOUR THAT HELP CAPTURE IT.

**WALL TILES:** SELECT BASED ON YOUR THEME. CONSIDER LARGE TILES OR FEATURE WALLS FOR A MODERN LOOK.

**TILE VARIETY:** USE UP TO THREE DIFFERENT TILES TO MAINTAIN A STREAMLINED APPEARANCE.

# STEP 9: PICK THE PIECES

**THIS CONSISTS OF ALL THE MAJOR PIECES, AS WELL AS THE KEY STYLING POINTS TO FINISH YOUR PERFECT NEW BATHROOM.**



## **VANITY:**

WHEN SELECTING A VANITY, CHOOSE BETWEEN WALL-HUNG OR FREE-STANDING TYPES, KEEPING IN MIND THAT WALL-HUNG VANITIES CREATE A SENSE OF SPACE, WHILE UNIQUE BASIN DESIGNS ADD STYLE.



## **BATH:**

DECIDE BETWEEN A FREE-STANDING OR BUILT-IN BATH THAT SUITS YOUR SPACE, STYLE, AND PRACTICAL NEEDS, KEEPING IN MIND THAT LARGER BATHS MAY REQUIRE MORE WATER.



## **SHOWER SCREEN:**

FRAMELESS SHOWER SCREENS CREATE A SLEEK, MODERN LOOK AND MAKE THE ROOM FEEL LARGER, SO SELECT ONE THAT COMPLEMENTS THE SIZE AND LAYOUT OF YOUR SHOWER.



## **TOILET:**

CHOOSE A TOILET BASED ON YOUR BATHROOM'S WASTE OUTLET TYPE (S-TRAP, P-TRAP, OR SKEW TRAP) AND ENSURE ITS DESIGN ALIGNS WITH YOUR BATH AND OVERALL STYLE.



## **TAPS & ACCESSORIES:**

OPT FOR DURABLE, HIGH-QUALITY TAPS AND ACCESSORIES THAT ENHANCE YOUR BATHROOM'S AESTHETIC, WHETHER THEY'RE MEANT TO BE BOLD FEATURES OR SUBTLE COMPLEMENTS.



## **MIRROR:**

PICK A MIRROR THAT MATCHES THE WIDTH OF YOUR VANITY FOR BALANCE OR CONSIDER A FULL-HEIGHT OPTION TO CREATE THE ILLUSION OF A TALLER ROOM WITH ADDED STYLE.

# STEP 10: CHOOSE YOUR LIGHTING

**PLAN LIGHTING THAT ENHANCES THE OVERALL AMBIANCE AND FUNCTIONALITY WITHOUT OVERPOWERING THE ROOM.**

COMBINE DIFFERENT LIGHTING TYPES FOR A BALANCED EFFECT. USE NEUTRAL BULBS FOR A CLEAN LOOK AND ENSURE COMPLIANCE WITH ELECTRICAL STANDARDS. WHERE NECESSARY, CREATE WARM TONES AROUND THE VANITY.

## TYPES OF BATHROOM LIGHTING:

- VANITY
- CEILING
- CEILING FAN
- SHOWER
- ACCENT
- WALL LIGHTS
- SKYLIGHTS



# STEP 11: FINALISE & PREPARE

**REVIEW ALL YOUR SELECTIONS TO CONFIRM THEY ALIGN TO YOUR BUDGET, DESIGN & GOALS. INCLUDE:**

## **DESIGN CHOICES**

- A FINAL PLAN: DOCUMENT ALL OF YOUR DESIGN CHOICES TO GUIDE THE RENOVATION PROCESS & ENSURE ALL DETAILS ARE ACCOUNTED FOR.

## **PAPERWORK**

- PERMITS: RESEARCH & SECURE NECESSARY PERMITS.
- CONTRACTOR INSTRUCTIONS: PROVIDE DETAILED INSTRUCTIONS FOR ANY SPECIFIC REQUESTS.

## **PREPARE FOR CONSTRUCTION**

- MATERIALS: PURCHASE AND STORE ALL MATERIALS.
- CONTRACTOR DETAILS: CONFIRM PROJECT SCHEDULE, DETAILS & TIMELINE.
- CONTINGENCY FUND: SET ASIDE 10% OF THE PROJECT COST.
- PET ACCOMODATION: ENSURE PETS ARE PROTECTED DURING CONSTRUCTION ACTIVITIES.

## **POST CONSTRUCTION**

- INSPECT WORK: CHECK FOR ISSUES + DOCUMENT ANY CORRECTIONS.
- STORE DOCUMENTS: KEEP ALL RECEIPTS, WARRANTIES, & CONTRACTS.

# STEP 12: DECORATE YOUR NEW SPACE

**NOW THAT ALL THE CONSTRUCTION HAS FINISHED, IT'S TIME FOR THE FUN PART OF DECORATING YOUR NEW BATHROOM.**

- ACCESSORIES: ADD TOWELS, BATH MATS, SOAP HOLDERS & OTHER ESSENTIALS.
- STORAGE SOLUTIONS: INCORPORATE LAUNDRY BASKETS, HOOKS, SHELVES & ORGANISERS.
- DECORATIONS: PERSONALISE WITH ARTWORK, ACCENT MIRRORS, PLANTS, CANDLES OR INCENSE.





# ARISTOCRATIC

CONSTRUCTIONS

**CONTACT US FOR ANY OF YOUR BATHROOM RENOVATION NEEDS.**

**GUIVARA BEYTON – 0431 973 183**  
**INFO@ARISTOCRATIC.COM.AU**